

Sophos Anti-Virus provides integrated cross-platform virus detection and disinfection on servers, desktops and laptops. Mobile devices are protected during synchronisation. It offers on-access, scheduled and on-demand scanning. Its unique architecture intelligently determines which files need to be virus checked, maximising user transparency and minimising performance overhead. Sophos Anti-Virus incorporates powerful management tools which enable centralised installation, configuration, updating and reporting.

## How it works

Sophos Anti-Virus uses the Sophos virus detection engine to scan for viruses.

Sophos's patented InterCheck technology optimises on-access virus detection. It uses a combination of virus scanning and checksumming to minimise the number of times each file needs to be virus checked, without compromising security.

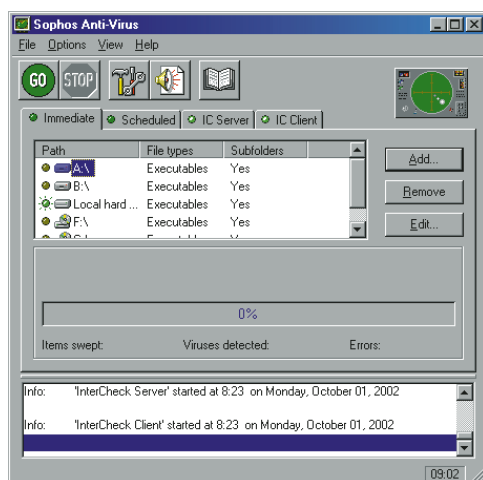
Installation, configuration and updating are centrally controlled. A range of management software allows administrators to monitor and control the network. No end-user intervention is required.

Sophos Anti-Virus is installed into a central installation directory (CID) from which servers and workstations on the network are automatically updated.

Enterprise Manager maintains network CIDs by providing automatic web-based downloads from the Sophos databank. SAVAdmin then manages Sophos Anti-Virus across an entire Windows network, while Remote Update allows users to update from a remote location.

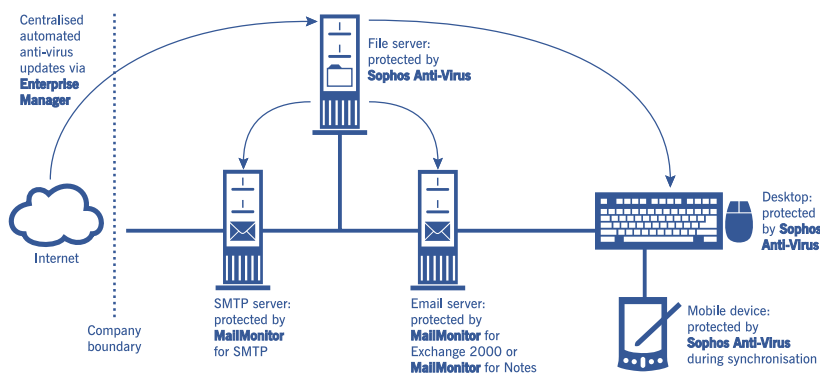
## Features and benefits

- Monitors all virus entry points, including disks, programs, documents, network drives CD-ROMs, as well as email and internet downloads at the desktop.
- Detects and disinfects macro viruses, boot sector viruses and PE executable viruses.
- Detects viruses in compressed attachments, including recursive archives.
- Detects polymorphic viruses using Sophos's advanced Virus Description Language (VDL) and a built-in code emulator.
- Allows virus checking to be performed automatically at scheduled times.
- Features an "immediate mode" which allows virus checking on demand.
- Provides automatic centralised reporting of every virus incident.
- Can be installed automatically on multiple workstations.
- Allows remote update and administration across the network using SAVAdmin.
- Allows constant automated web-based downloads of the latest updates to the network via Enterprise Manager.
- Allows remote update of individual laptops via the internet from the user's company website.
- Receives small (about 1 Kb) updates.
- Cannot be disabled by end users.
- Is available in multiple language versions.
- Includes 24-hour support, 365 days a year.



*Sophos Anti-Virus for Windows NT/2000/XP*

<b>Function</b>	Scanning servers desktops and laptops for known viruses.
<b>On-demand scanning</b>	Immediate scanning and scheduled scanning of volumes, directories and individual files via a graphical interface or command line interface.
<b>On-access scanning</b>	InterCheck technology intercepts and scans files as they are accessed.
<b>Virus identity updates</b>	Continuous updates are available via the Sophos databank website using Enterprise Manager, or for individual remote users, from their company website using Remote Update. Updates are also available on <a href="http://www.sophos.com">www.sophos.com</a> and monthly Sophos CD.
<b>Virus alerts</b>	Notification of a virus can be by a variety of means – desktop alerts, network messages, InterCheck server event, SMTP email, SNMP trap and log files.
<b>OS supported</b>	Microsoft Windows 95/98/Me/NT/2000/XP. Linux kernel version 2.2.7 or greater, libc6 or libc5. FreeBSD 3.0 or greater. SunOS 5.6 or greater; Solaris 7 or greater. HP/UX 10.20 or greater. AIX 4.2 or greater. VAX 5.0 or greater; Alpha version 1.0 or greater. Digital Unix v4.0D or greater; Compaq True64 Unix 5 or greater. SCO UnixWare 7.0 or greater; SCO OpenServer 5 or greater. Novell NetWare version 4.2, 5.1 and 6. OS/2 Warp version 3 or greater (version 4 for InterCheck). Macintosh 8.1 and greater.
<b>File systems supported</b>	FAT, NTFS, CDFS, HPFS, JFS and Mac OS.
<b>Networks supported</b>	Microsoft Networking, Novell NetWare, Windows NT and NetWare cluster servers, TCP/IP, InterDrive NFS (FTP Software, Chameleon NFS (NetManage), Maestro NFS (Hummingbird Communications), Solstice NFS (Sun Microsystems), IBM LAN, DECnet and Digital Pathworks.
<b>Note</b>	Not all functionality is available on all platforms. Specific platform information and details of product certification can be found at <a href="http://www.sophos.com/products/software/antivirus/">http://www.sophos.com/products/software/antivirus/</a> .



*Sophos Anti-Virus protecting all virus entry points*

30-day evaluation software can be obtained from <http://www.sophos.com/downloads/products/>

fs/020913

**SOPHOS PTY LTD**  
Sydney, Australia

**SOPHOS SARL**  
Paris, France

**SOPHOS GMBH**  
Mainz, Germany

**SOPHOS SRL**  
Milan, Italy

**SOPHOS KK**  
Yokohama, Japan

**SOPHOS ASIA**  
Singapore

**SOPHOS PLC**  
Oxford, UK

**SOPHOS AMERICAS**  
Boston, MA, USA

**SOPHOS**  
[WWW.SOPHOS.COM](http://WWW.SOPHOS.COM)