



Sophos Enterprise Manager is an administration tool allowing automatic distribution of Sophos Anti-Virus (SAV) and the latest virus identity files from a remote website to a local file server. It works seamlessly with SAVAdmin, enabling Windows software to be distributed to the desktops.

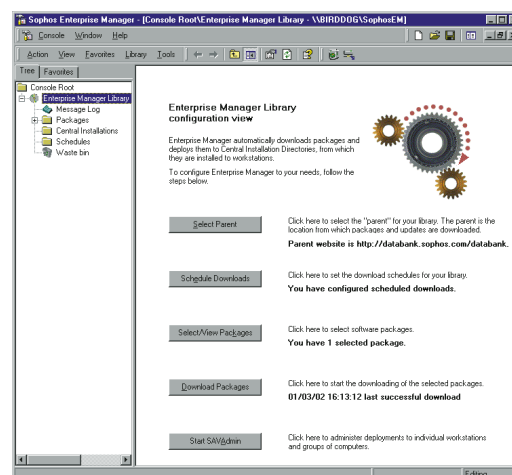
Enterprise Manager puts administrators in full control by allowing them to schedule automated downloads at specified times. These functions can also be performed on demand. In addition, Enterprise Manager ensures the integrity of any downloaded file, checking that it has not been tampered with or corrupted since it was issued by Sophos.

How it works

Sophos Enterprise Manager automatically connects to the Sophos databank website at pre-set times and on-demand to check that downloaded Sophos software is up to date. The download and distribution of software is administered by the Enterprise Manager console, an MMC (Microsoft Management Console) 1.2 snap-in running on a Windows NT/2000/XP computer.

The administrator can subscribe to products available from the Sophos databank and download them to a Sophos library located on a Windows NT/2000/XP computer.

When a library receives new or updated software, it pushes it out to its central installation directories (CIDs). Using SAVAdmin, Sophos applications on desktops can automatically update themselves from these CIDs.

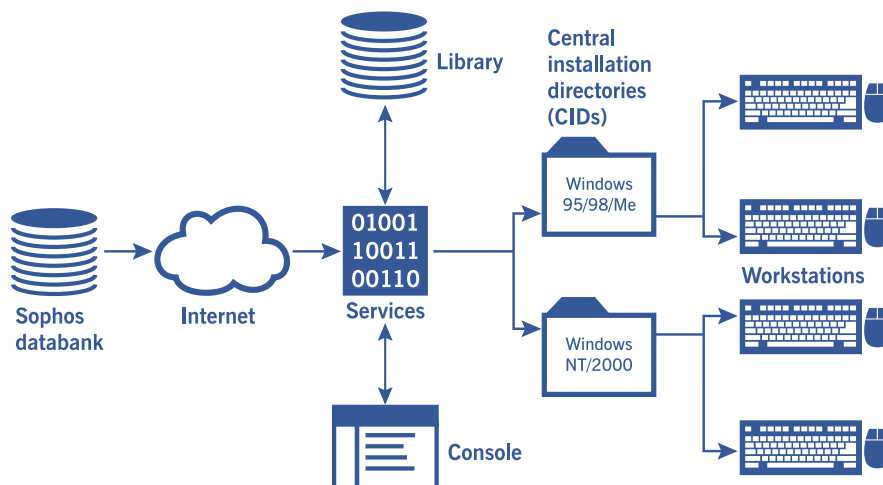


Sophos Enterprise Manager console

Features and benefits

- Offers automatic and manual distribution of Sophos software enterprise-wide.
- Transfers only the necessary files to avoid sending duplicate data across network links, reducing bandwidth usage.
- Uses checksumming technology to assure a file's integrity.
- Allows the administrator to specify what is downloaded and when.
- Contacts the Sophos databank website at set times and downloads updated products which have been subscribed to.
- Downloads and distributes new virus identities (IDEs) automatically.
- Works with SAVAdmin, the Sophos deployment tool, to distribute specified Sophos software to servers and workstations on the network.
- Can distribute products to any supported platform on a LAN.
- Supports hierarchical redistribution of software within the organisation over internet, intranet or WAN.
- Restricts use of the databank exclusively to corporate Enterprise Manager subscribers.
- Includes 24-hour support, 365 days a year.

| | |
|--------------------------------------|---|
| Function | Enterprise-wide administration and distribution of Sophos software. |
| Mode of operation | Version 1.2 of MMC (Microsoft Management Console) gives administrators access to the Enterprise Manager console and allows them to control software distribution. |
| SAV platforms supported | Windows NT/2000/XP; Windows 95/98/Me. |
| System requirements | The Sophos library and console require Windows NT 4 with service pack 6A or Windows 2000. Internet Explorer 5 or above is also required. |
| Databank access | Via login name and password*. |
| Dial-up connection | Supported. |
| Polling frequency | Up to 24 times a day and on demand. |
| Proxy authentication support | Anonymous; Basic Authentication; NT Challenge/Response. |
| MMC-to-library connection | Multiple libraries can be viewed simultaneously over UNC connections. |
| Library-to-library connection | Via URL or UNC. |
| Library-to-CID connection | Via UNC. |
| CID server support | Windows, NetWare 4+, Samba. |
| Deployment of SAV to desktops | Via SAVAdmin (Sophos management tool) over UNC. |



How Enterprise Manager distributes products

* Credentials for a 30-day evaluation can be obtained from the Sophos website. Permanent credentials are assigned by Sophos when a licence is purchased.

fs/020911